

# 海岸公園 及

# 海岸保護區的生態與功能



漁 農 自 然 護 理 署



點解需要

海岸公園同海岸保護區??






# HONG KONG UNDERWATER

香 港 的 海 洋

船內機  
船隻禁區  
Inboard Vessels  
Prohibited Zone

A



An aerial photograph of a coastal park and protected area. The landscape is dominated by lush green hills and a large, winding body of water with varying shades of blue and turquoise. The water is surrounded by green vegetation and some small islands or peninsulas. In the foreground, there are some brownish patches, possibly tidal flats or a dry riverbed. The sky is clear and blue with a few small white clouds. The overall scene is a beautiful natural landscape.

# 我們的海岸公園 和海岸保護區

# 海岸公園條例 ( 第476章 )

海岸公園條例 (第476 章) 頒布於 1995



漁農自然護理署署長 (郊野公園及海岸公園管理局總監)

指定

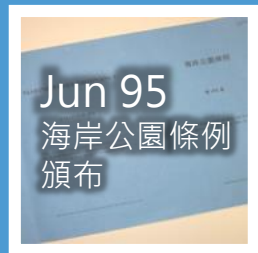
管理

管轄

海岸公園

海岸保護區





1995



1996



2001



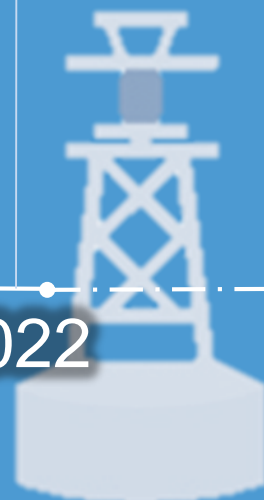
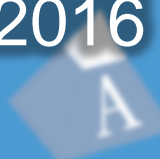
2016



2020



2022



# 本港的七個海岸公園及一個海岸保護區

## Seven Marine Parks and one Marine Reserve in Hong Kong



印洲塘海岸公園  
Yan Chau Tong  
Marine Park



東平洲海岸公園  
Tung Ping Chau  
Marine Park



沙洲及龍鼓洲海岸公園  
Sha Chau &  
Lung Kwu Chau  
Marine Park



海下灣海岸公園  
Hoi Ha Wan  
Marine Park



大小磨刀海岸公園  
The Brothers Marine Park



大嶼山西南海岸公園  
Southwest Lantau Marine Park



南大嶼海岸公園  
South Lantau Marine Park

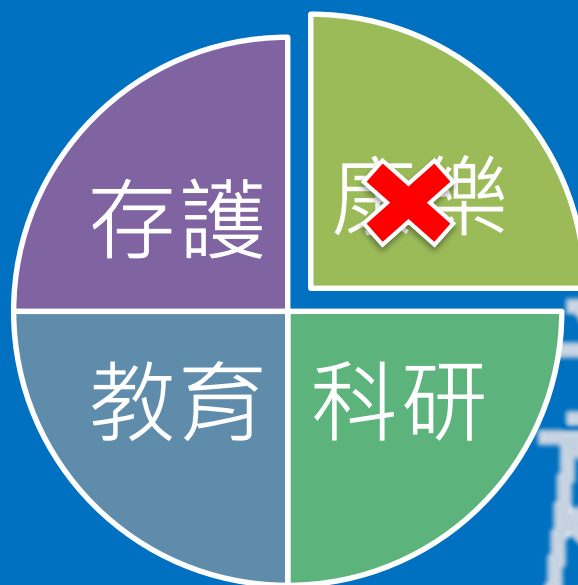


鶴咀海岸保護區  
Cape D'Aguiar  
Marine Reserve

# 海洋保護區

海岸公園

海岸保護區







1200公頃

沙洲+龍鼓洲+白洲

沙洲及龍鼓洲海岸公園

An aerial photograph of a vast coastal park area. The water is a deep blue-green color, with two prominent islands in the foreground. The background features a range of green mountains under a clear blue sky with some light clouds. Several ships are visible in the water. The text '970公頃' is overlaid in the center-right of the image.

970公頃

大小磨刀海岸公園

An aerial photograph of a coastal park. The scene features a large body of deep blue water in the foreground and middle ground. In the background, a range of rugged, brownish-green mountains stretches across the horizon. Several smaller islands and peninsulas are visible, some with patches of green vegetation. The sky is a clear, bright blue. The text '650公頃' is overlaid in white on the right side of the image.

650公頃

大嶼山西南海岸公園



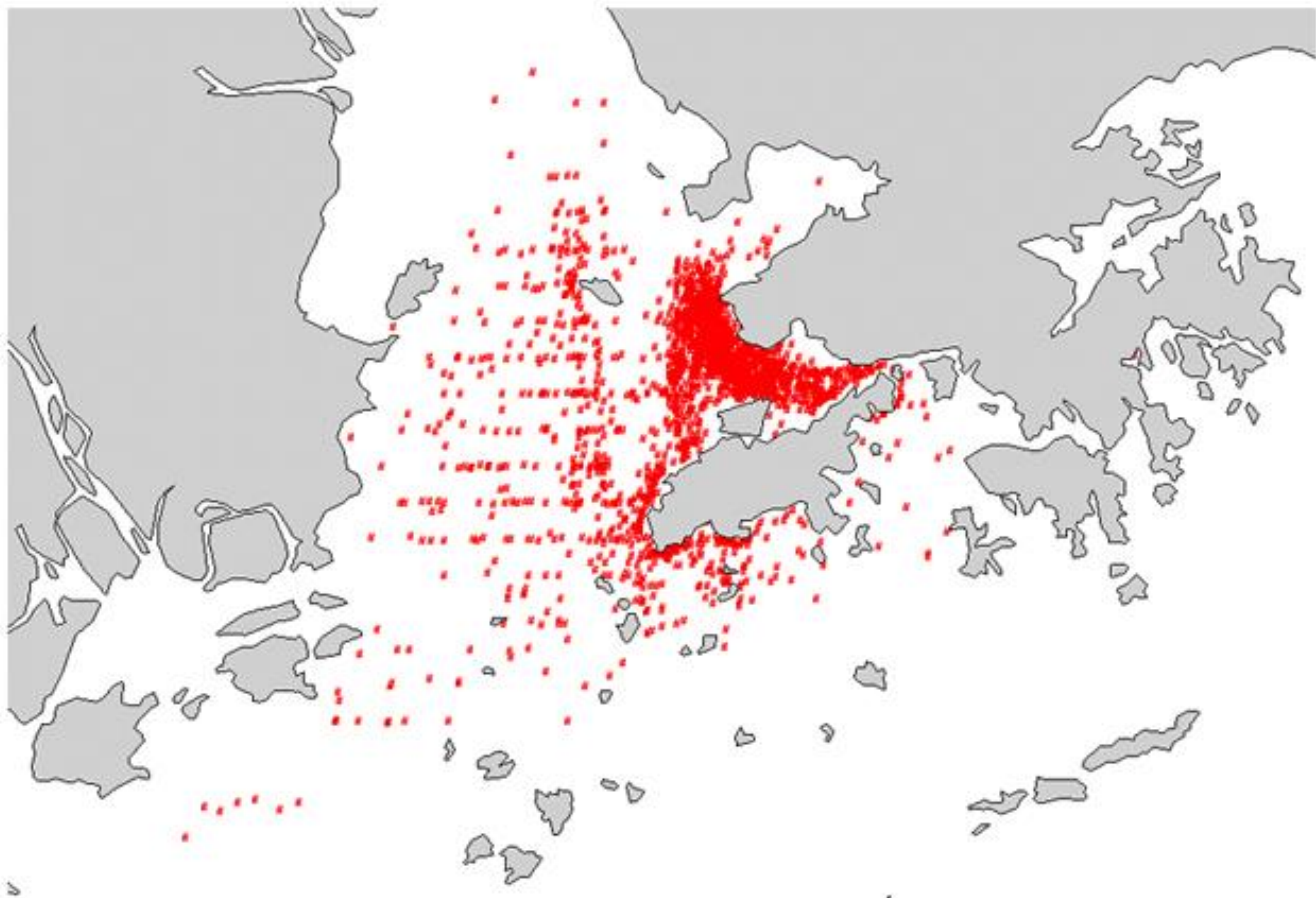


中華白海豚

Chinese White Dolphin

📷 沙洲龍鼓洲 S&LK





# 南大嶼海岸公園

江豚

2067公頃







時速限制：**10**海里  
Vessel Speed  
Restriction：**10** Knots

 漁農自然護理署郊野公園及海岸公園管理局  
Country & Marine Parks Authority, AFCD

時速限制10海里



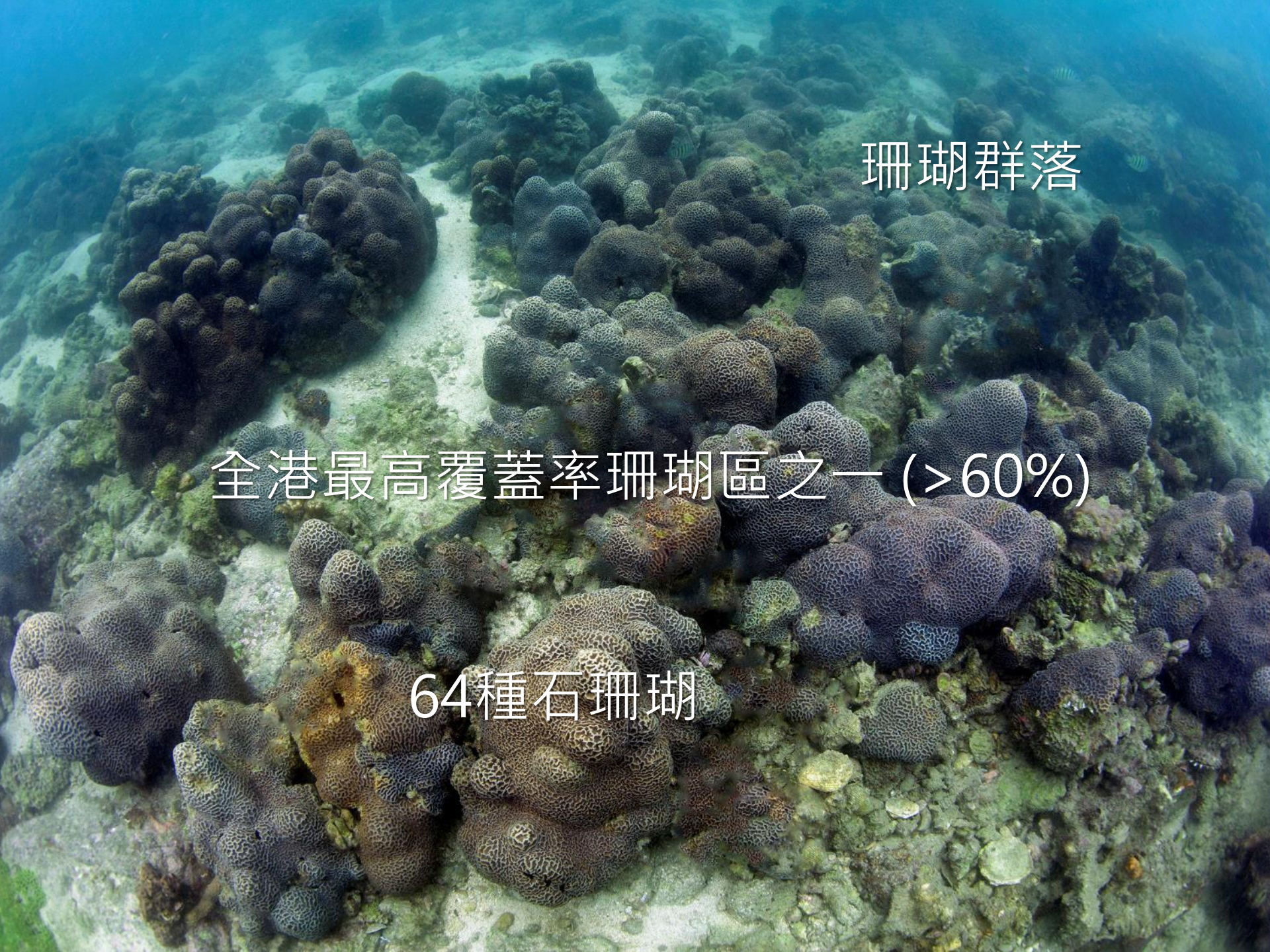
An aerial photograph of a coastal park. The image shows a large, irregularly shaped bay with clear blue water. The bay is surrounded by dense green forest. In the foreground, there is a small cluster of buildings, likely a village or a small town, situated on a hillside. The water in the bay is a mix of deep blue and lighter, sandy tones near the shore. A small pier or dock extends into the water on the right side. The overall scene is a mix of natural beauty and human development.

260公頃

受遮蔽內灣

海下灣海岸公園

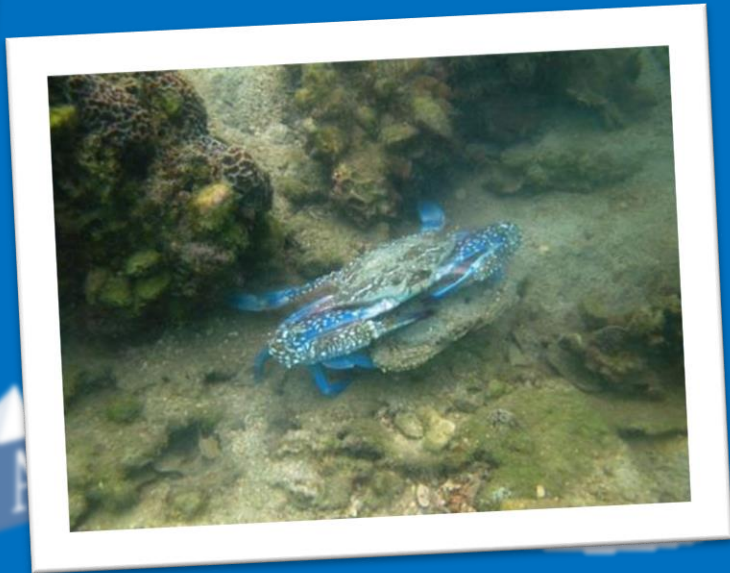


An underwater photograph showing a dense coral reef. The corals are primarily dark brown and purple, with a complex, porous structure. The water is clear and blue, and the seabed is visible in the background.

珊瑚群落

全港最高覆蓋率珊瑚區之一 (>60%)

64種石珊瑚





機動船隻禁區



碇泊地點



An aerial photograph of a coastal park. The landscape is dominated by vibrant green hills and a complex coastline with numerous inlets and peninsulas. The water is a deep blue, contrasting with the green land. In the foreground, there are some brownish, possibly reworked or agricultural areas. The sky is clear and blue with a few wispy clouds. The overall scene is one of a diverse and scenic natural environment.

680公頃

多樣化的生境

印洲塘海岸公園



佔地2公頃

全港最大片的矮大葉藻海草床

矮大葉藻





這裡有齊 8 種

全港 8 種

紅樹林



白骨壤



木欖



海漆



桐花樹



秋茄



An aerial photograph of a coastal park. The image shows a large, forested island or peninsula with a rocky coastline. The water is a deep blue, and there are some small structures and a path visible on the island. The text "270公頃" is overlaid on the right side of the image.

270公頃

生物多樣性十分豐富

東平洲海岸公園



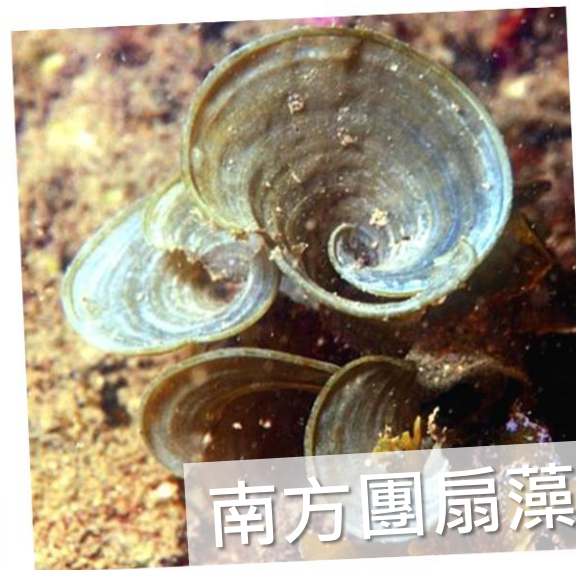


马尾藻

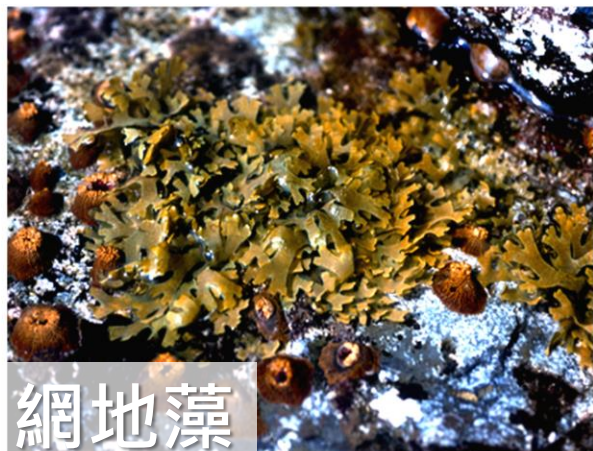
超過65個品種



乳節藻



南方團扇藻



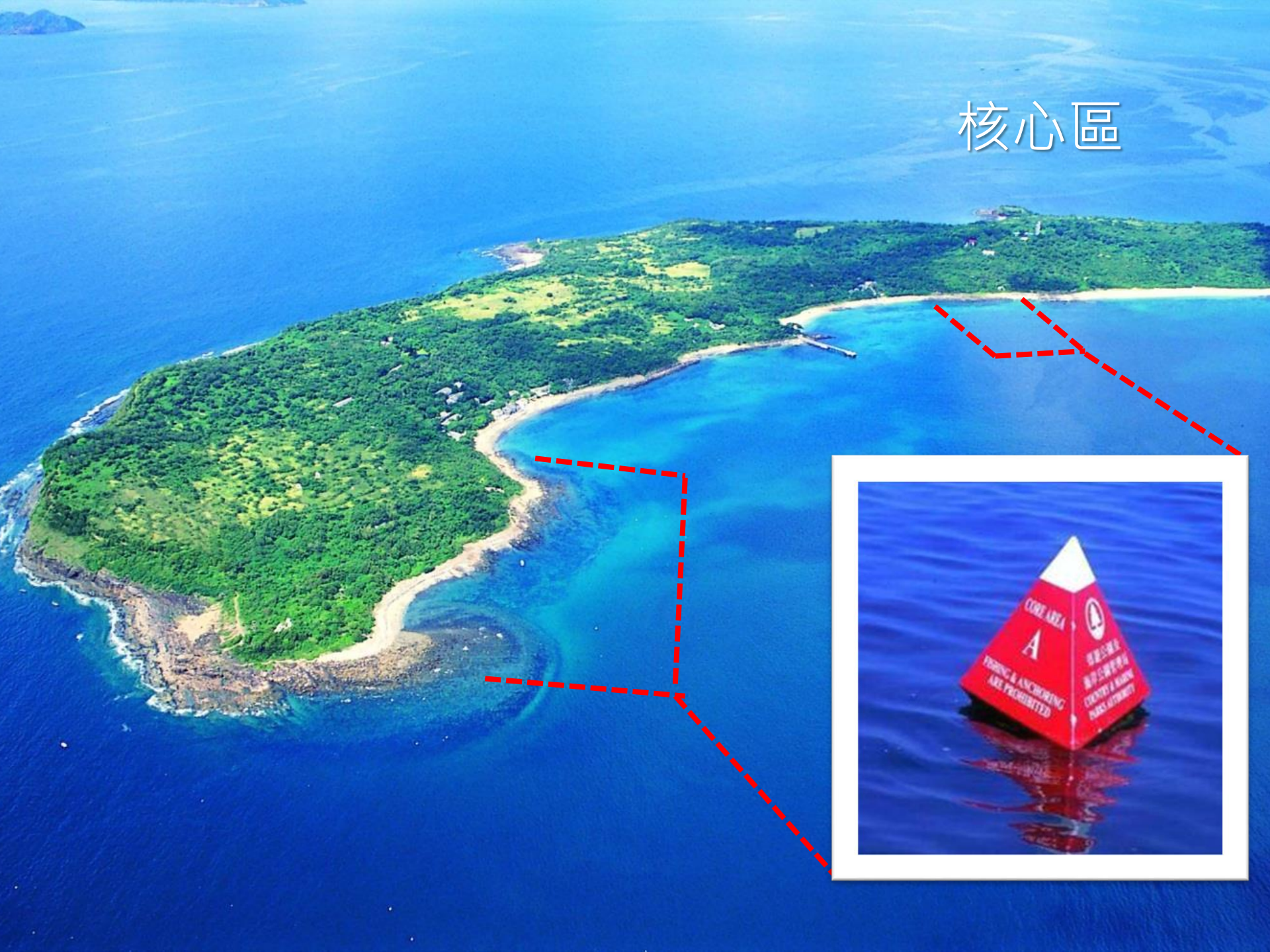
網地藻



# 地質公園



核心區





20公頃

鶴咀海岸保護區



# 生物和生境多樣化



船內機  
船隻禁區  
Inboard Vessels  
Prohibited Zone



# 進行教育及科學方面的研究 (需持有許可證)



受較海岸公園嚴格的規管



溢出效應

Spill-over effect

海岸公園 / 海岸保護區



# 海岸公園遊覽守則

切勿挖掘沙石

切勿翻起海岸石頭

切勿捕獵或騷擾海洋生物

切勿撿取活生或已死的海洋生物及其部份

切勿站立於珊瑚上

切勿亂拋垃圾

切勿污染海水

避免於浮力控制完全掌握前於珊瑚區潛水



教學資源



<https://marineclassroom.afcd.gov.hk/tc/home>



©版權所有。本學習材料內容及照片之版權由漁農自然護理署及相關攝影師擁有,未經書面同意,不得翻印。

©All rights reserved. Articles and photographs in this learning material belong to the Agriculture, Fisheries and Conservation Department and relevant photographers, and may not be reproduced without written permission.

